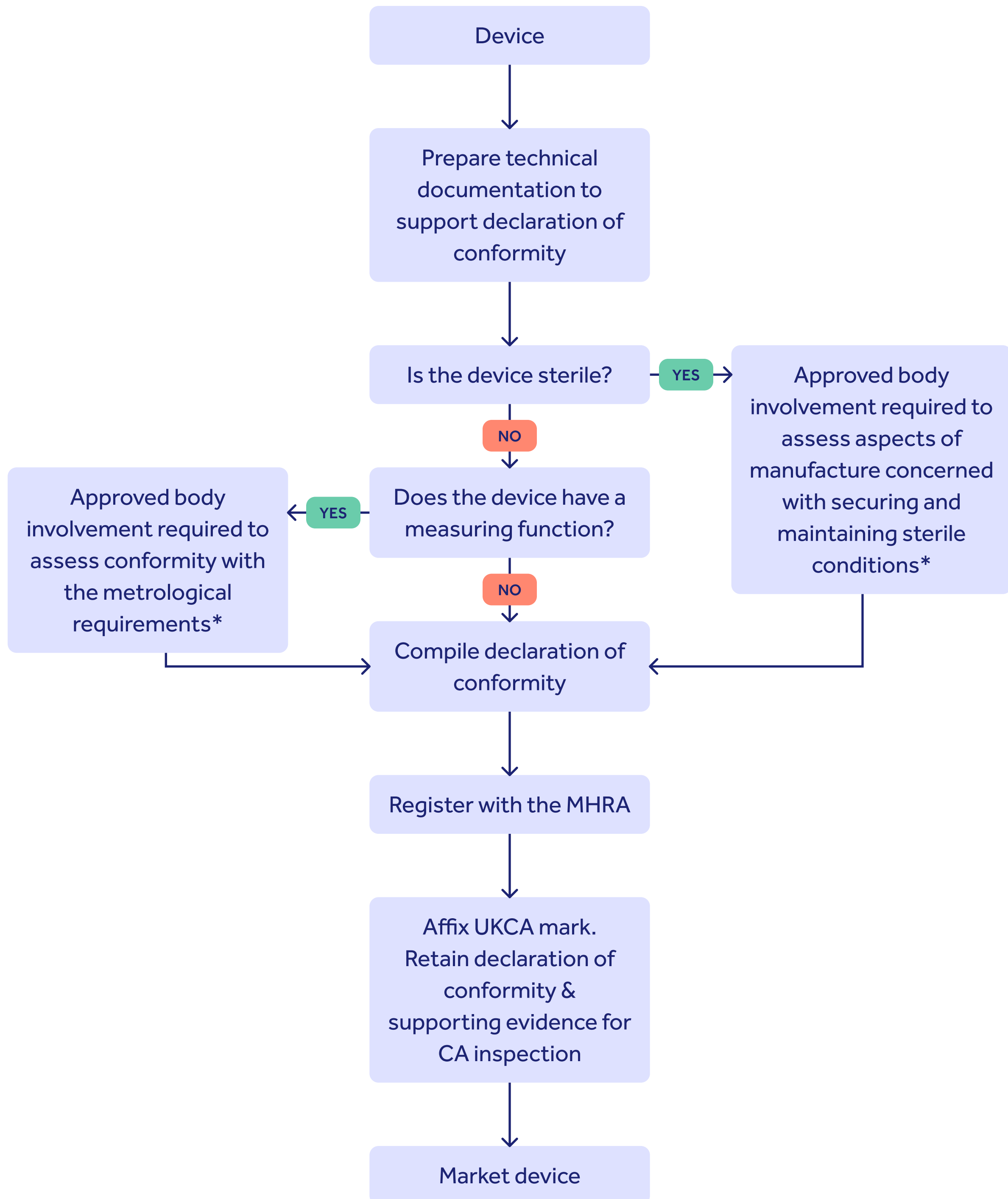
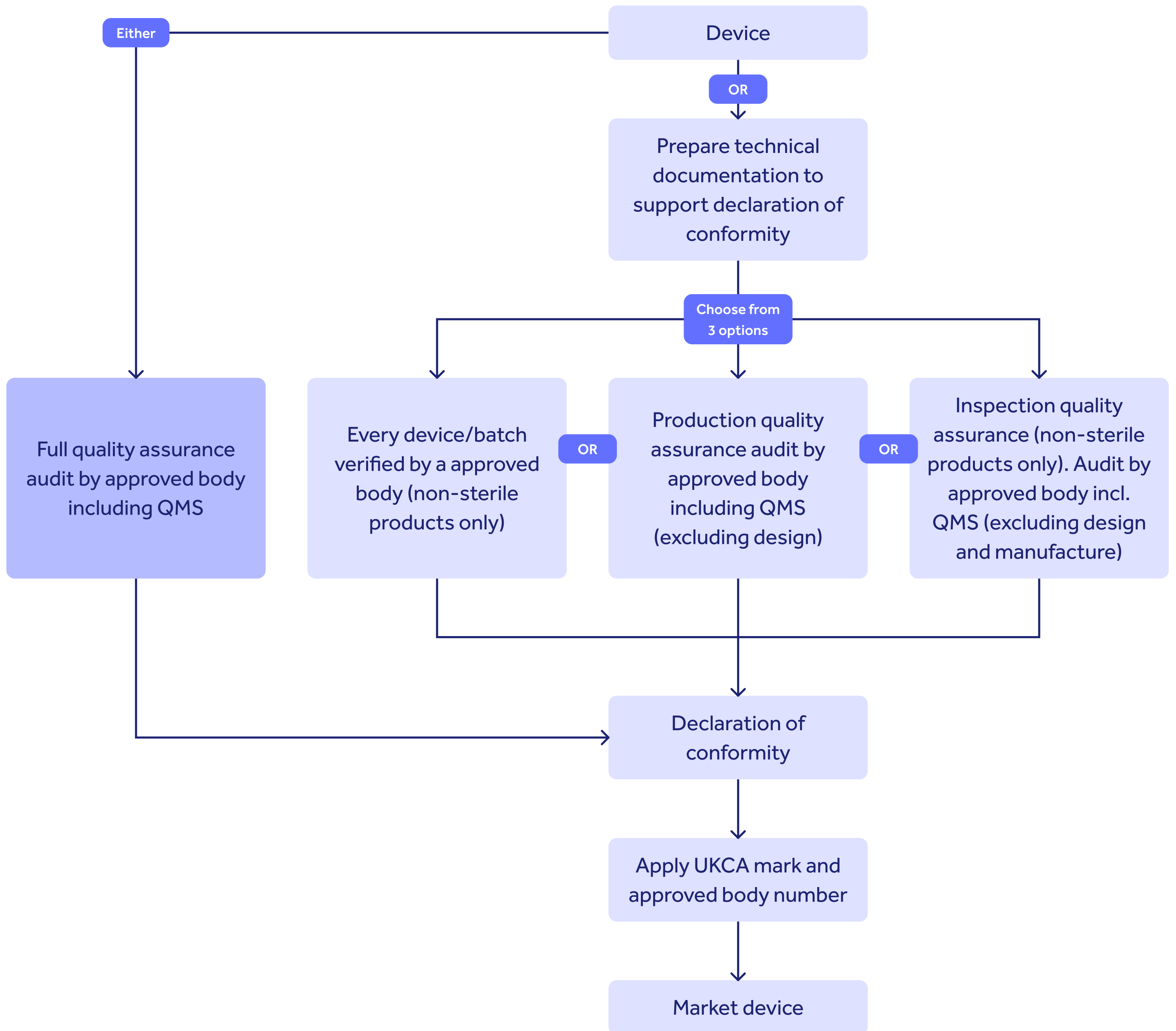


Class I medical devices: routes to UKCA marking



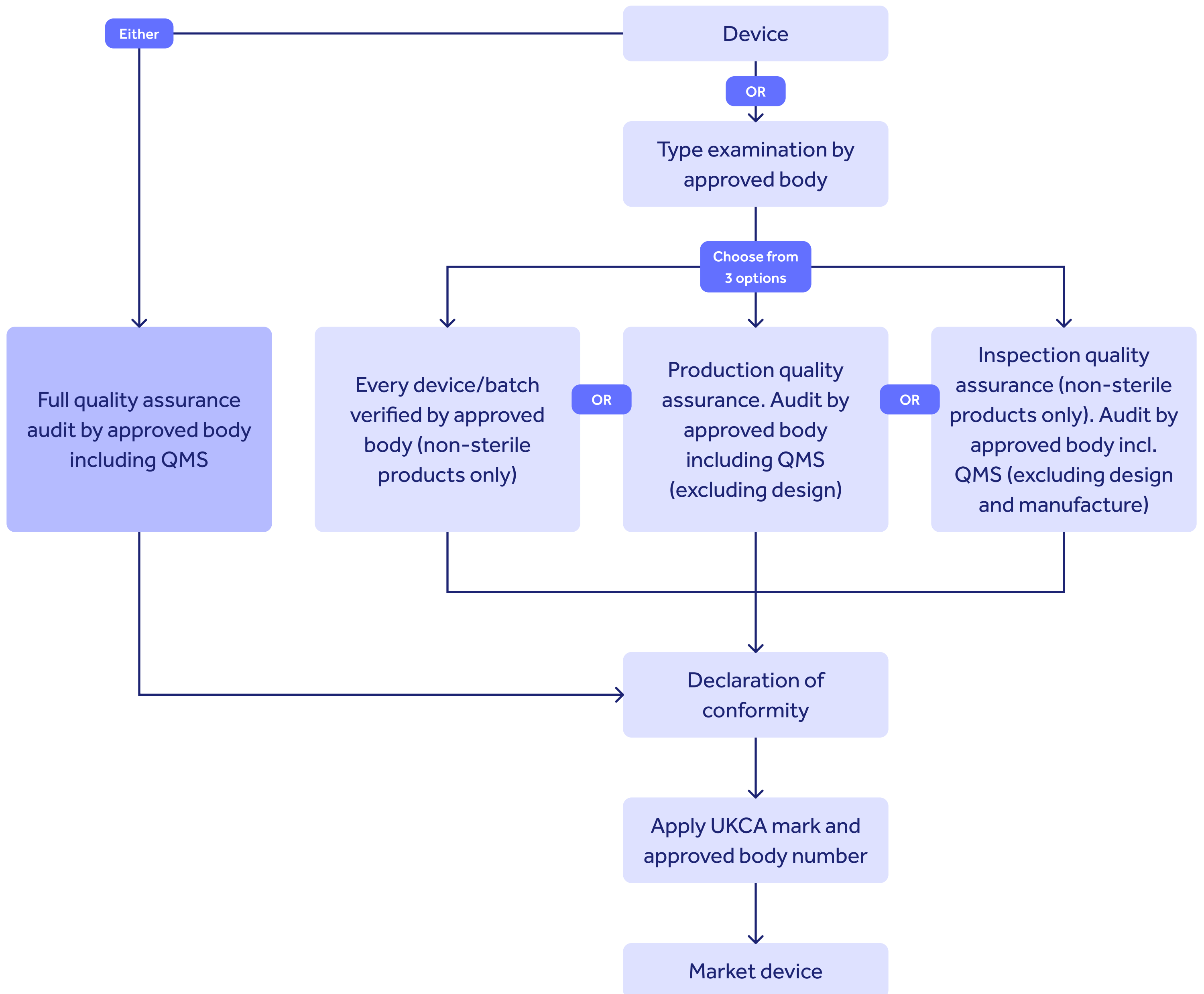
*Approved body registration number must appear alongside the UKCA mark

Class IIa medical devices: routes to UKCA marking



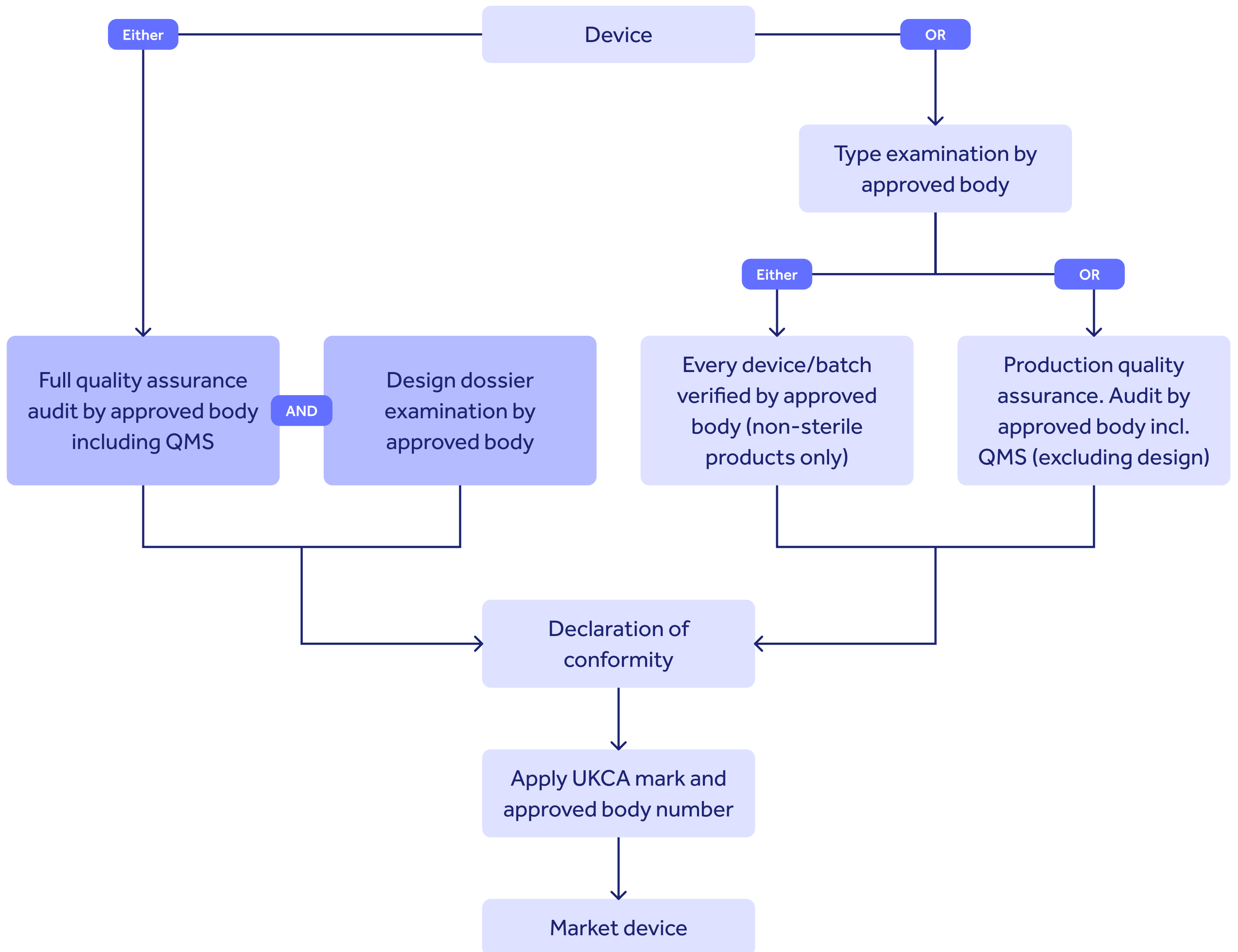
*Approved body registration number must appear alongside the UKCA mark

Class IIb medical devices: routes to UKCA marking



*Approved body registration number must appear alongside the UKCA mark

Class III medical devices: routes to UKCA marking



*Approved body registration number must appear alongside the UKCA mark